



A European Discovery
Platform for the SSH

Suzanne Dumouchel | **Huma-Num (CNRS)** |

Discover
Connect
Collaborate



TRIPLE project: Key facts

- launched on 1 October 2019
- duration of 42 months (2019–2023)
- financed under the Horizon 2020 framework with approx. 5.6 million Euros
- consortium of 19 partners from 13 European countries
- Coordinated from France by Huma-Num, a unit of the French National Centre for Scientific Research (CNRS)
- currently 87 staff members working for one or more of the 8 work packages



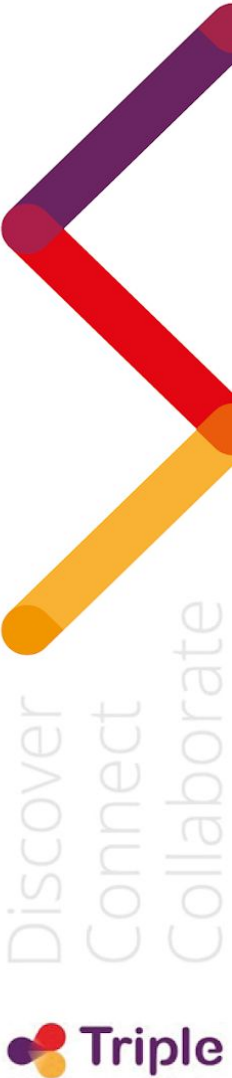
TRIPLE platform: Key facts

- is the heart of the project and will be released as a prototype in autumn 2021;
- is an innovative **multilingual and multicultural discovery solution** for the social sciences and humanities (SSH);
- will provide a **single access point** that allows you to explore, find, access and reuse materials such as literature, data, projects and researcher profiles at European scale;
- is based on the **Isidore search engine** developed by Huma-Num (unit of CNRS)
- will be one of the dedicated **services of OPERAS**, the research infrastructure supporting open scholarly communication in the social sciences and humanities in the European Research Area.



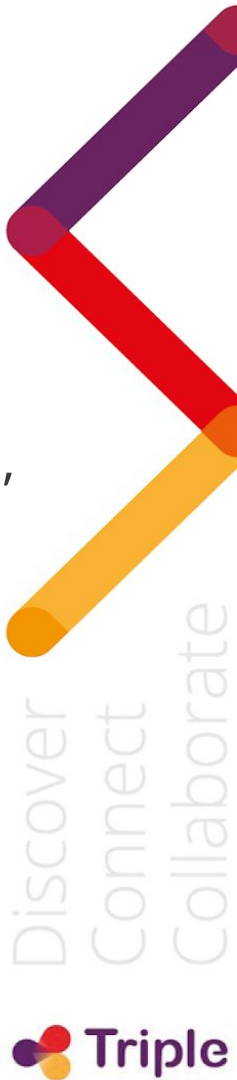
Why TRIPLE?

- strong fragmentation of SSH research
- SSH open scholarly resources (data, publications, other researchers' profiles and projects) currently scattered across local repositories
- low use and reuse of SSH research
- missed interdisciplinary collaboration possibilities
- limited societal impact



TRIPLE Consortium: 19 partners

- **Abertay University**, United Kingdom
- **CESSDA ERIC**, Norway:
 - **UL-ADP** (Slovenian Social Science Data Archives)
 - **UTA-FSD** (Finnish Social Science Data Archive)
 - **UKDS** (UK Data Archive as UK Data Service)
- **CLARIN ERIC**, Netherlands
- **CNRS**, France:
 - **Huma-Num**
 - **OpenEdition**
- **DARIAH ERIC**, France
- **EGI**, Netherlands
- **IBL PAN**, Poland
- **Know-Center**, Austria
- **Lexical Computing**, Czechia
- **Max Weber Foundation**, Germany
- **MEOH**, Belgium
- **National Documentation Centre (EKT)**, Greece
- **National Research Council (CNR)**, Italy
- **Net7**, Italy
- **Nuromedia**, Germany
- **OAPEN**, Netherlands
- **Open Knowledge Maps**, Austria
- **University of Coimbra**, Portugal
- **University of Zadar**, Croatia



TRIPLE Consortium



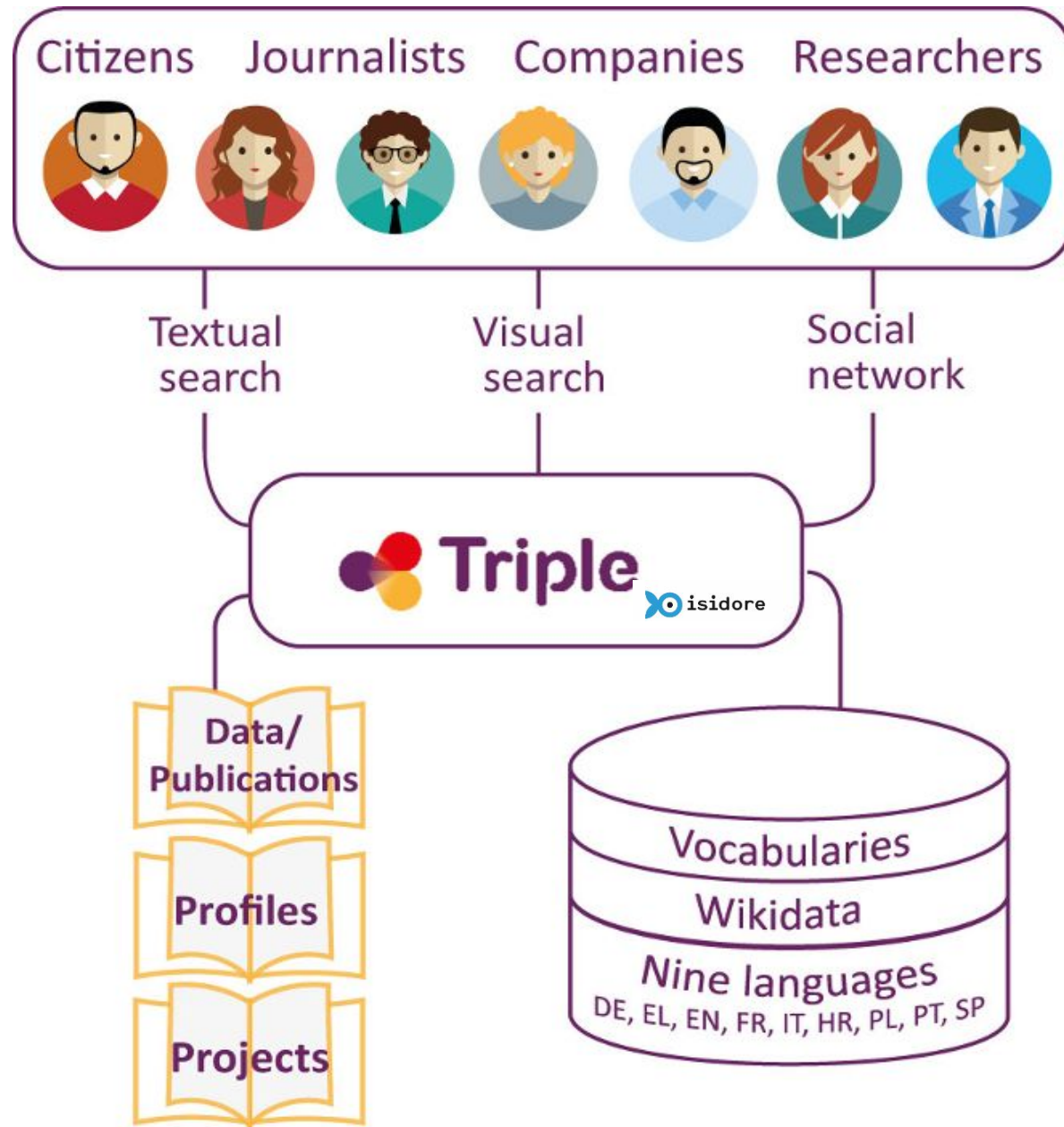
Discover
Connect
Collaborate

TRIPLE: Work packages and lead beneficiaries

- **WP1** Management (CNRS)
- **WP2** Data acquisition and categorisation (IBL PAN)
- **WP3** Co-design and user research (AU)
- **WP4** Integration and building of TRIPLE platform (CNRS)
- **WP5** Development and integration of innovative services (NET7)
- **WP6** Open Science and EOSC integration (CNR)
- **WP7** Innovation, exploitation and sustainability (KNOW)
- **WP8** Communication and dissemination (MWS)
- **WP9** *Ethics requirements (CNRS)*



GOTRIPLE: Platform (contents, processes, services)

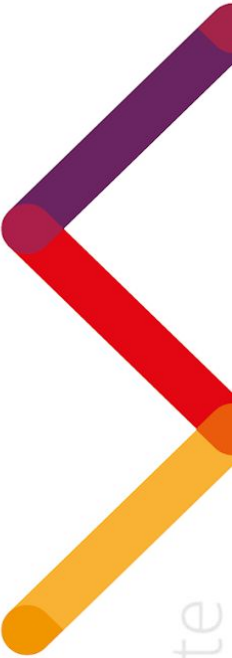


#Discover #Connect #Collaborate

TRIPLE platform services and architecture will promote a "Community of Practice"

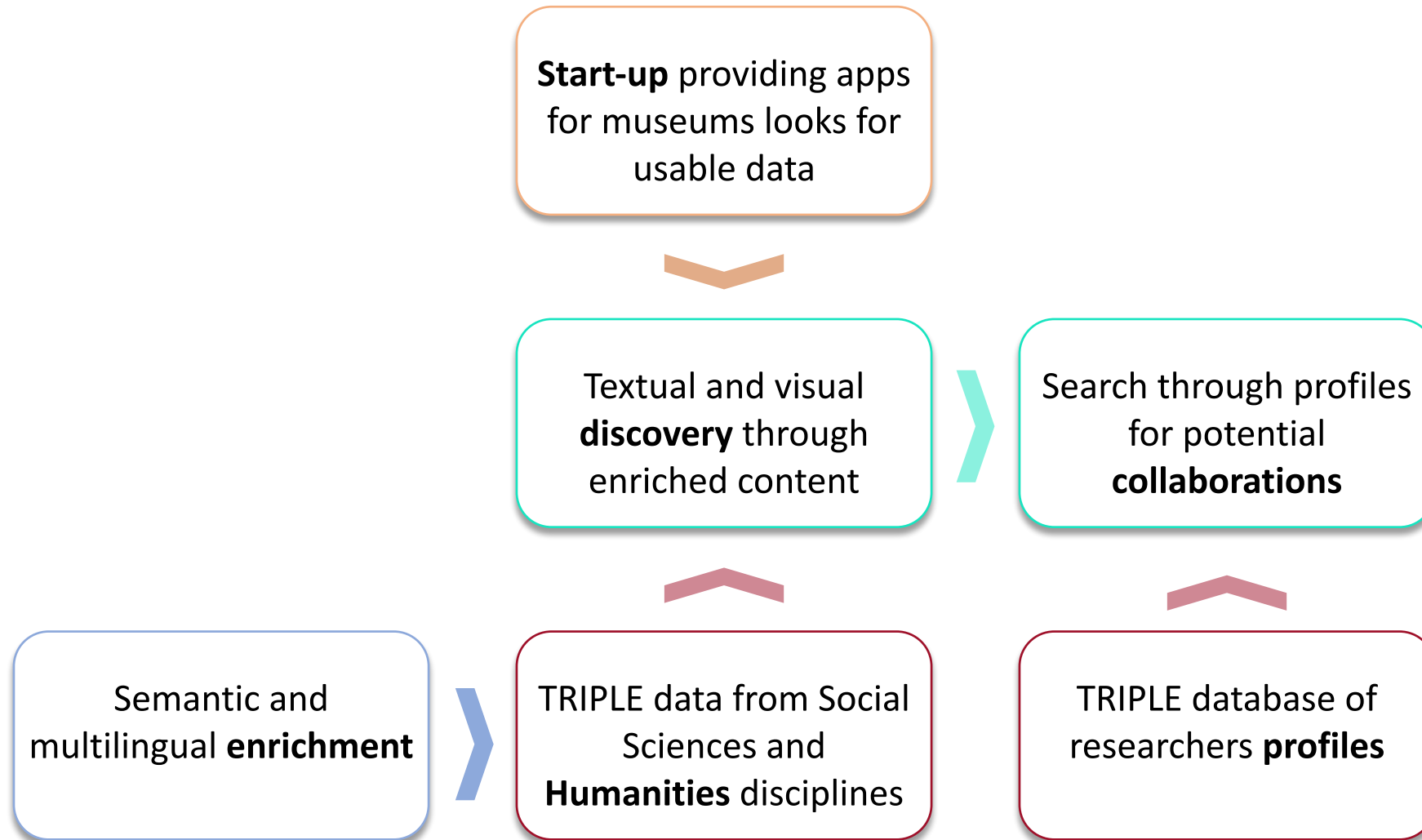
- foster new collaborations and networking
- encourage interdisciplinarity
- take into account multilingual and multicultural diversity
- facilitate crowdfunding

Thanks to innovative services such as visualisation, trust building system, recommendation tool, annotation tool and a crowdfunding platform.



Discover
Connect
Collaborate

TRIPLE: A discovery use case



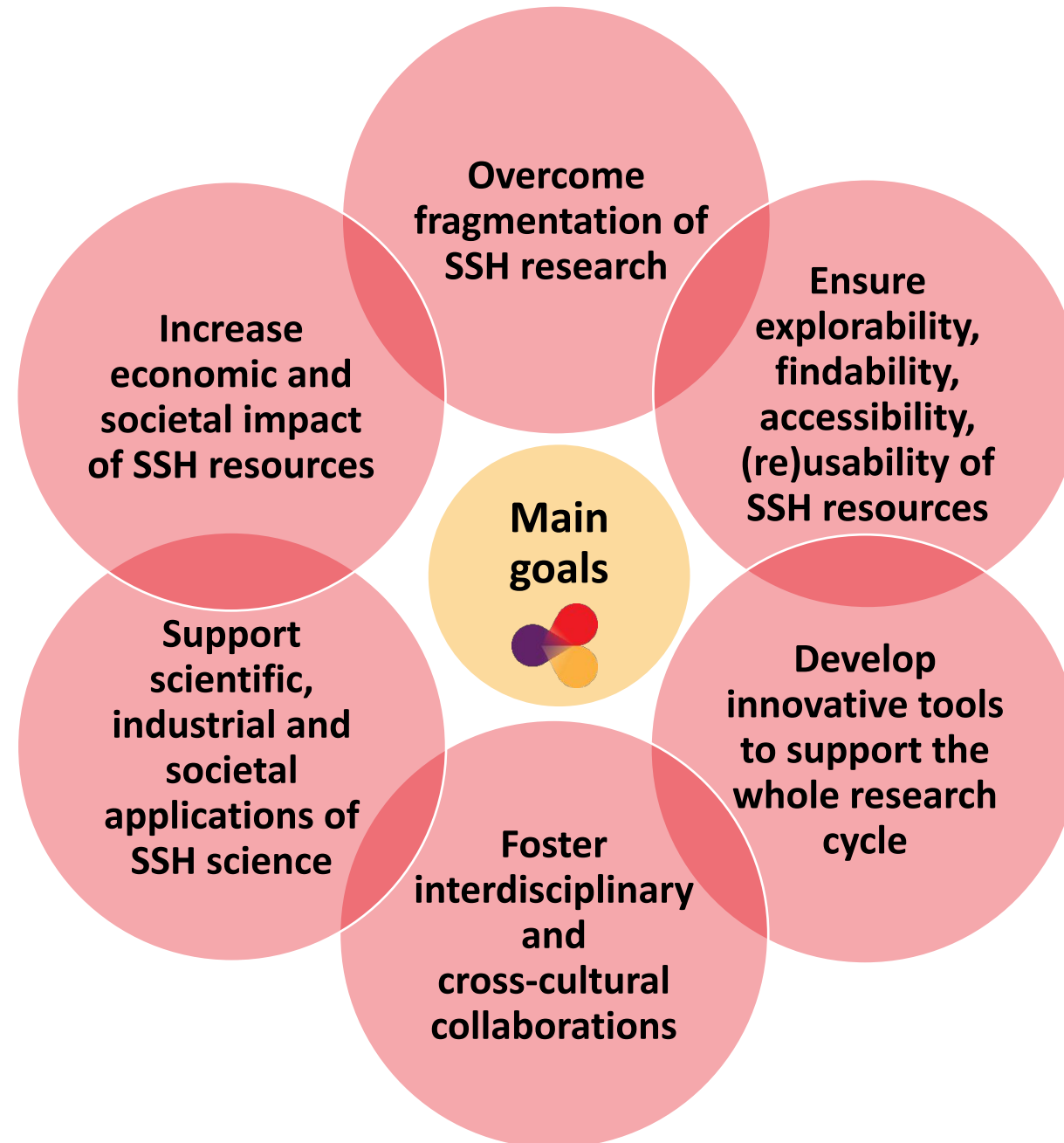
TRIPLE: Stakeholders

- researchers
- institutions and service providers such as universities and libraries
- public authorities and policy makers
- enterprises and consultancies
- journalists and other media representatives
- citizens



TRIPLE:

Main goals



TRIPLE: Main goals (1)

- **TRIPLE** will overcome the strong disciplinary, linguistic and cultural fragmentation of SSH research by providing a single multilingual access point to material currently scattered across local repositories.
- The **TRIPLE** discovery platform will help users to explore, find, access and (re)use open scholarly SSH resources: research data and publications, researcher profiles and projects.



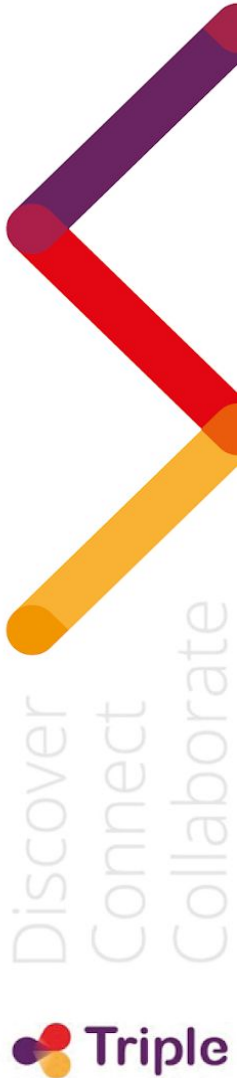
TRIPLE: Main goals (2)

- **TRIPLE** will make use of innovative digital tools to support research, and it will discover new ways of funding research, for instance through a crowdfunding platform.
- **TRIPLE** will foster new interdisciplinary collaborations in Europe and worldwide by bringing together researchers with diverse skills, practices and competencies, language and cultural backgrounds.

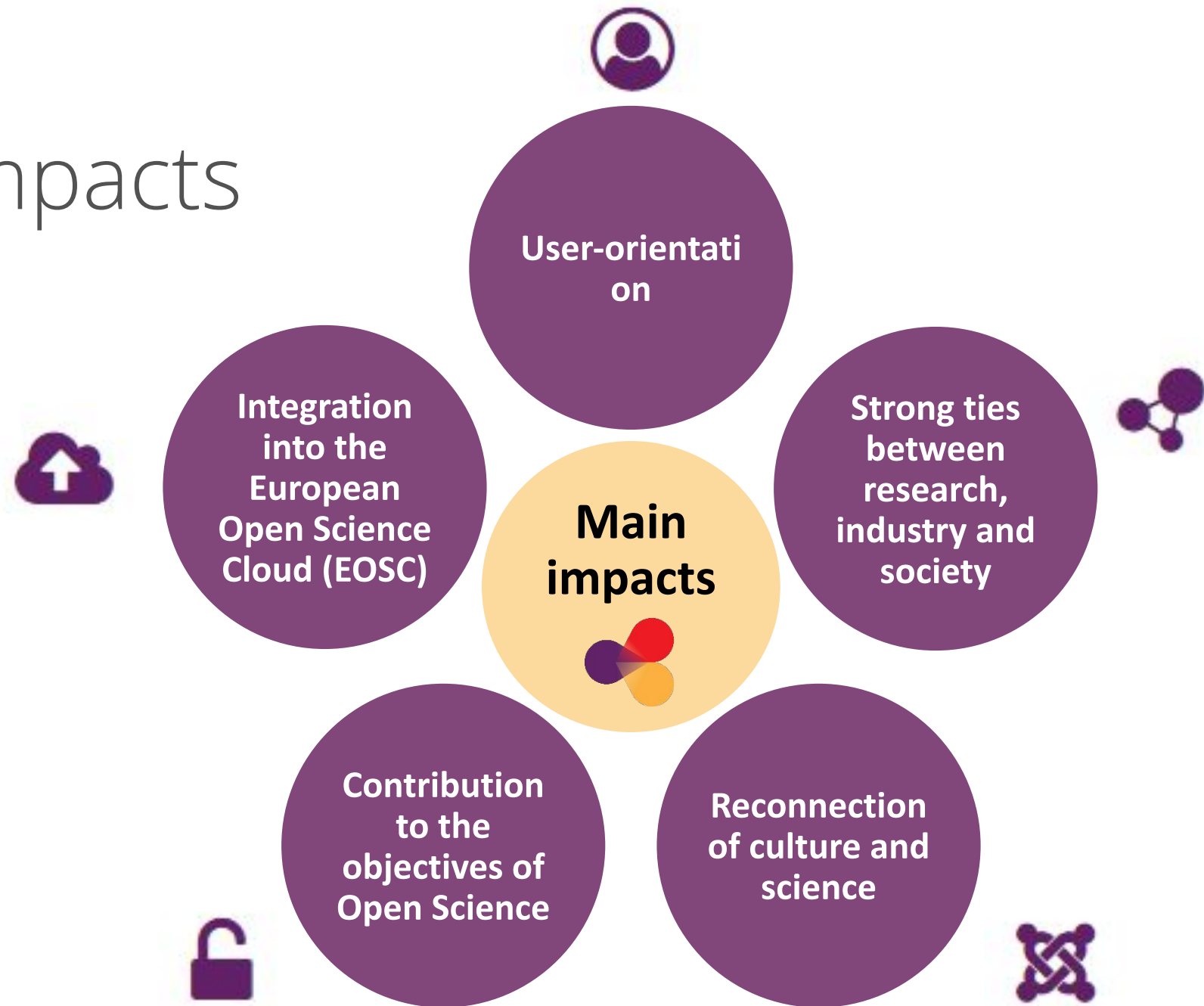


TRIPLE: Main goals (3)

- **TRIPLE** will support scientific, industrial and societal applications of SSH science by maximising the reuse of resources through Open Science and FAIR principles and a multidisciplinary transfer of knowledge. The visibility of SSH research will thus be increased.
- **TRIPLE** will increase the economic and societal impact of SSH resources for the scientific community at large, but also for citizens, policy makers, the media and enterprises.



TRIPLE: Main impacts



TRIPLE: Main impacts (1)



- **User-orientation**

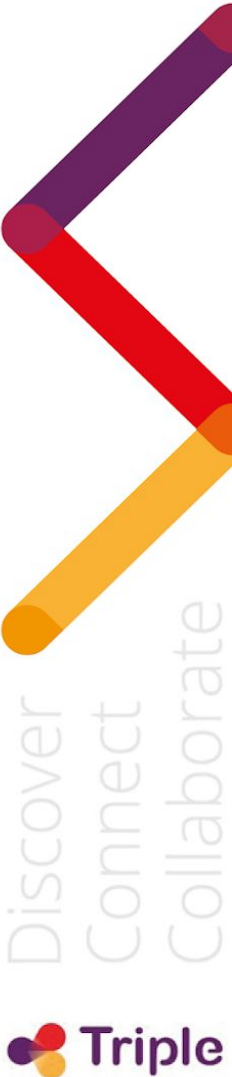
- TRIPLE integrates co-design principles into research and the development of new services. Users are key to all phases of the process, from needs analysis to tool testing and evaluation, as they know best how they work and what they need.



TRIPLE: Main impacts (2)



- **Strong ties between research, industry and society:**
 - TRIPLE facilitates more efficient and effective SSH research for societies at large by involving civil society, public institutions and companies into scientific projects, thus strengthening the links between different types of stakeholders as well as enhancing citizens' trust towards science.



TRIPLE: Main impacts (3)

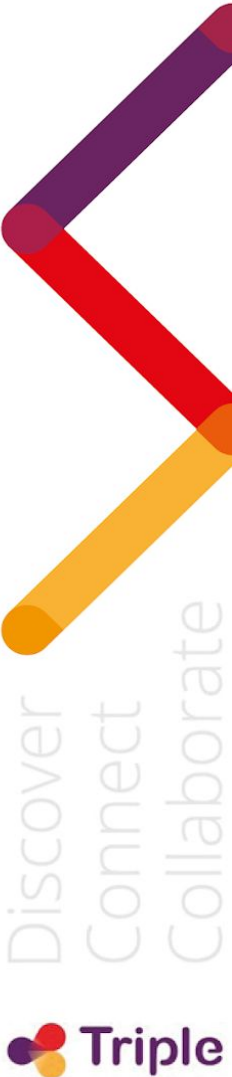


- **Reconnection of culture and science:**
 - TRIPLE is not only a platform that ensures the discoverability of SSH resources and facilitates collaborations, but also a cultural platform to discover, understand and highlight European diversity in terms of societies, languages and practices. It helps to promote cultural diversity in Europe.



TRIPLE: Main impacts (4)

- **Contribution to the objectives of Open Science:**
 - TRIPLE improves the access to open content and resources and facilitates collaborations across disciplinary and language boundaries. Data sharing and usage according to the FAIR principles – Findable, Accessible, Interoperable, Reusable – is fostered.



TRIPLE: Main impacts (5)

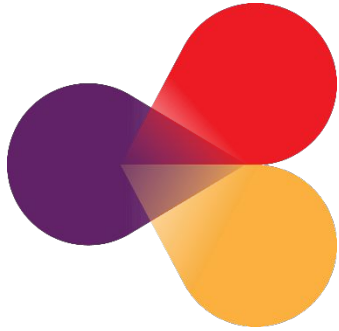


- **Integration into the European Open Science Cloud (EOSC):**

- Because of a close link with the SSH Open Cloud (SSHOC) project, TRIPLE will be a major component of the SSH marketplace, which will be the entry door of the EOSC for all the different SSH services. Through TRIPLE, new innovative actors will be involved in the complex EOSC ecosystem.



TRIPLE and the European Open Science Cloud



**EUROPEAN OPEN
SCIENCE CLOUD**



Discover
Connect
Collaborate

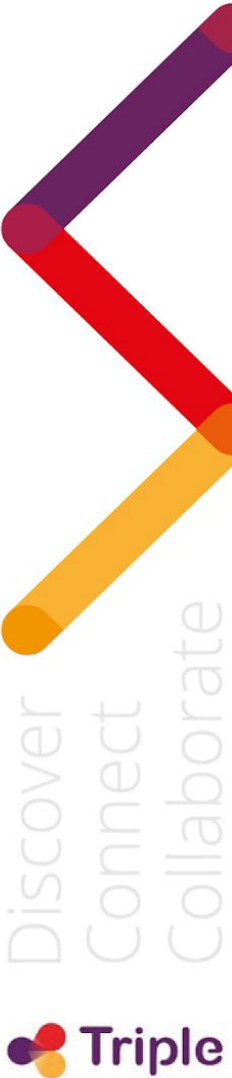
TRIPLE and EOSC

- TRIPLE: an answer to Call [INFRAEOSC-2-2019](#):
“**Prototyping new innovative services**” of the Horizon 2020 parent programme [“Development, deployment and operation of ICT-based e-infrastructures”](#)
- expected impact
 - integrating co-design into research and development of new services to better support scientific, industrial and societal applications benefiting from a strong user orientation
 - supporting the objectives of Open Science by improving access to content and resources, and facilitating interdisciplinary collaborations
 - fostering the innovation potential by opening up the EOSC ecosystem of e-infrastructure service providers to new innovative actors



TRIPLE and EOSC

- TRIPLE is to become part of the services offered by the EOSC hub and expand its scope of intervention
- TRIPLE as the entry point to the EOSC for SSH researchers



3 simultaneous strategies to integrate TRIPLE into the EOSC

Through OPERAS
RI dedicated to
open scholarly
communication in
SSH



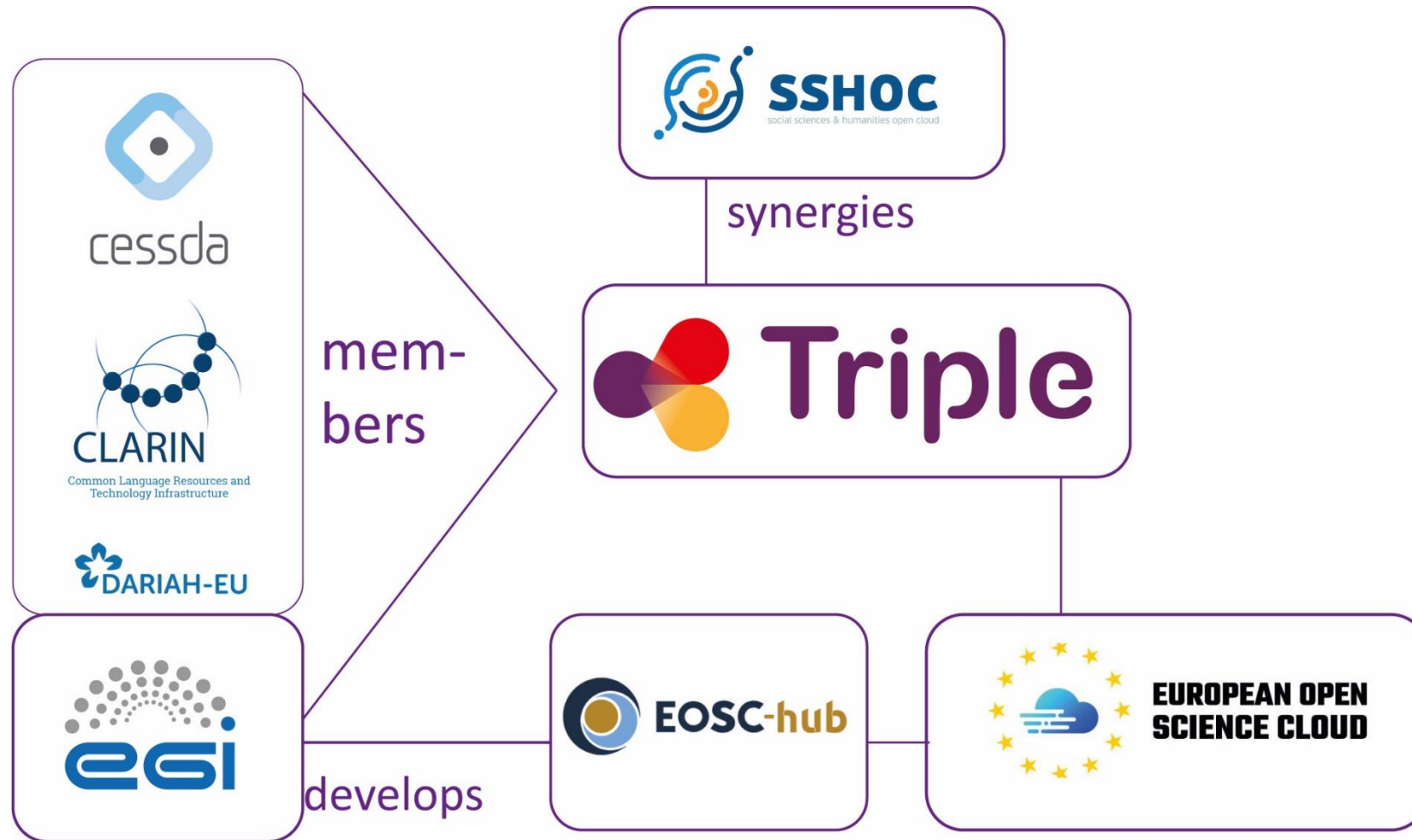
Through the SSH
Open Marketplace



By including the
discovery
platform into the
EOSC catalogue



TRIPLE and related projects



GOTRIPLE: The discovery platform of OPERAS Research Infrastructure



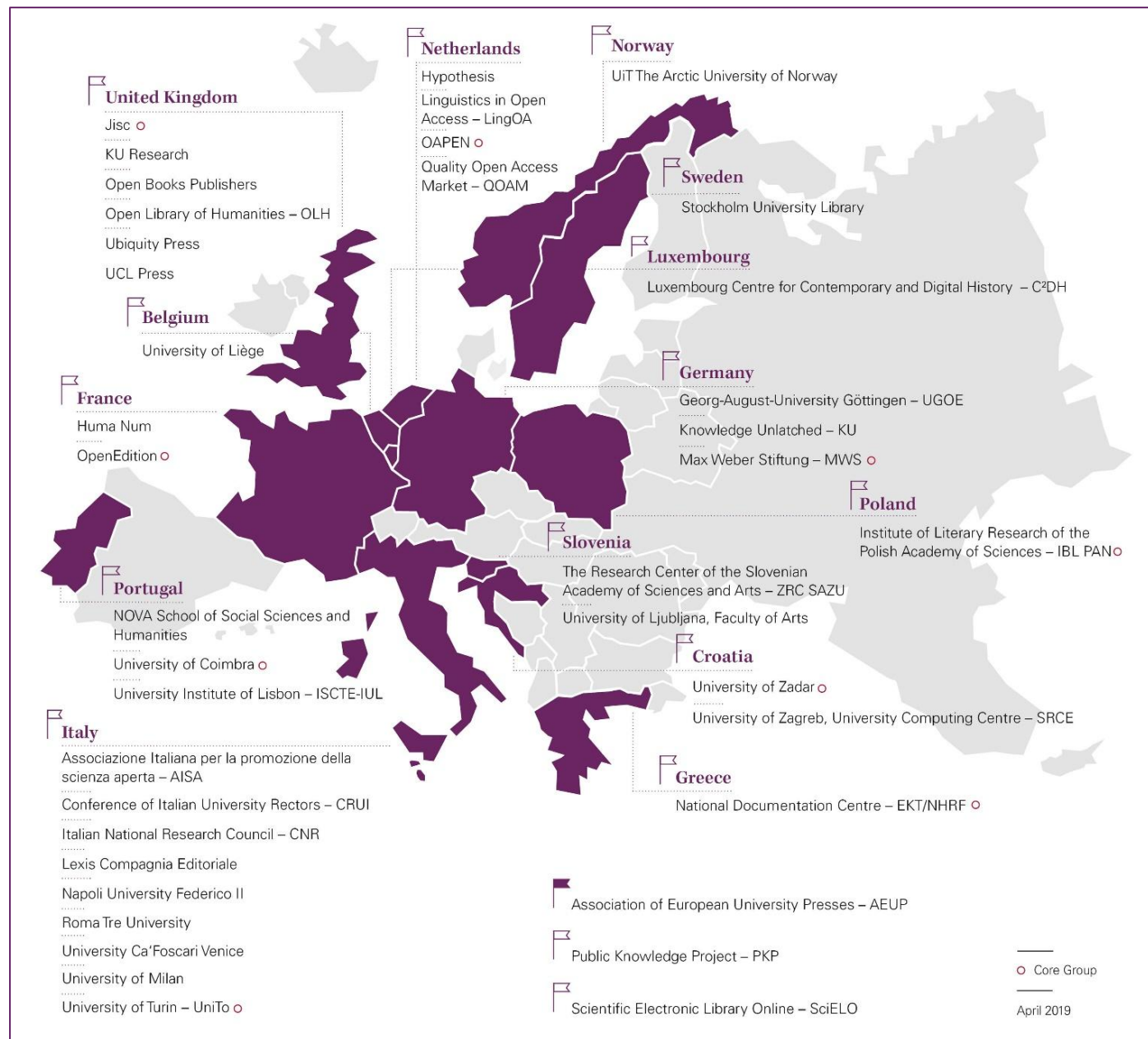
OPERAS is a distributed **Research Infrastructure** supporting open scholarly communication in the SSH in the European research area

- Its mission is
 - to coordinate and federate resources (services, practices, technology) across main actors in the SSH scholarly communication in Europe
 - to efficiently address the scholarly communication needs of European researchers in the field of SSH.



OPERAS members :

- gathers 57 organizations from 16 countries
- led by a 10 members Executive Assembly
- coordinated from France by OpenEdition and Huma-Num (CNRS)



Discover
Connect
Collaborate



**www.
gotriple.eu** 

Follow us on:



Triple_EU



@TripleEU



TripleEU

*Access the TRIPLE project outputs
from [this page of our website](#)*